

ORBIGO

OrbiGo POC Device Launcher

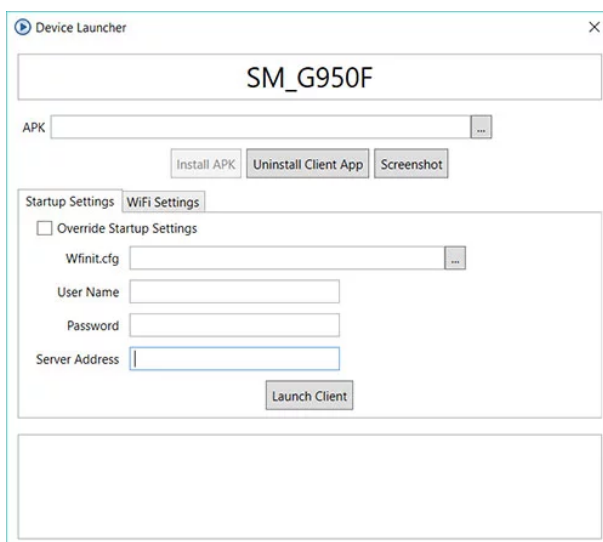
Device Launcher allows quick initial setup of OrbiGo POC client on Android devices. Install Device Launcher on a Windows PC, connect device via USB and deploy OrbiGo POC client in a few seconds.

- **Note!** Device launcher is especially useful for screenless radios.

Device Launcher features:

- APK installation and uninstallation
- Login setting (user name, password, server address)
- OrbiGo POC client launch
- WiFi settings
- Screenshot

Start Device Launcher and connect Android device to PC via USB. Device Launcher should automatically detect connected device and show model name in the textbox at the top of the window.



- **Note!** Device Launcher can detect a device only when USB debugging is enabled in the device system settings, under Developer options. On Android 4.2 and higher, the Developer options screen is hidden by default. To make it visible, go to Settings > About phone and tap Build number seven times. Return to the previous screen to find Developer options at the bottom. On screenless radios, USB debugging is usually enabled by default.

- APK - Select APK file to install on a device. Latest OrbiGo POC APK is published on www.orbigo.se/support page.
- Install APK - Install APK on connected device.
- Uninstall Client App - Uninstall OrbiGo POC APK on connected device. Makes sense when APK to be applied has older version than client installed on the device.
- Screenshot – makes screenshot on connected radio. May be useful for screenless devices.

Startup Settings tab

- Override Startup Settings – Apply settings specified on the tab upon pressing Launch Client button.
- Wfinit.cfg – Select wfinit.cfg file to apply on client device. Note that all settings defined in wfinit.cfg will be applied to the device. Not only login credentials.
- User Name, Password, Server Address – Login credentials to use on the device upon pressing Launch Client button.

WiFi Settings tab

- Specify WiFi credentials to enable on the device and click Enable WiFi button.
 - **Note!** Be careful applying WiFi credentials on devices running Android older than 4.1. They will be applied for the first time but won't be amended later in case if some changes are required for the same SSID.